

Data Set

- **Global**
 - IGS (385)
 - ITRF2005 (302 with 252 overlap with IGS)
 - TIGA (161 out of 276)
 - VLBI/SLR collocated (114 out of 137)
 - Doris (30 out of 30)
 - Total 435 (current)
- **Regional (northern America)**
 - SCIGN
 - PBO
 - Others
 - Total 1121 (current)

SOPAC Reanalysis for SNARF and Web-based Analysis Tools

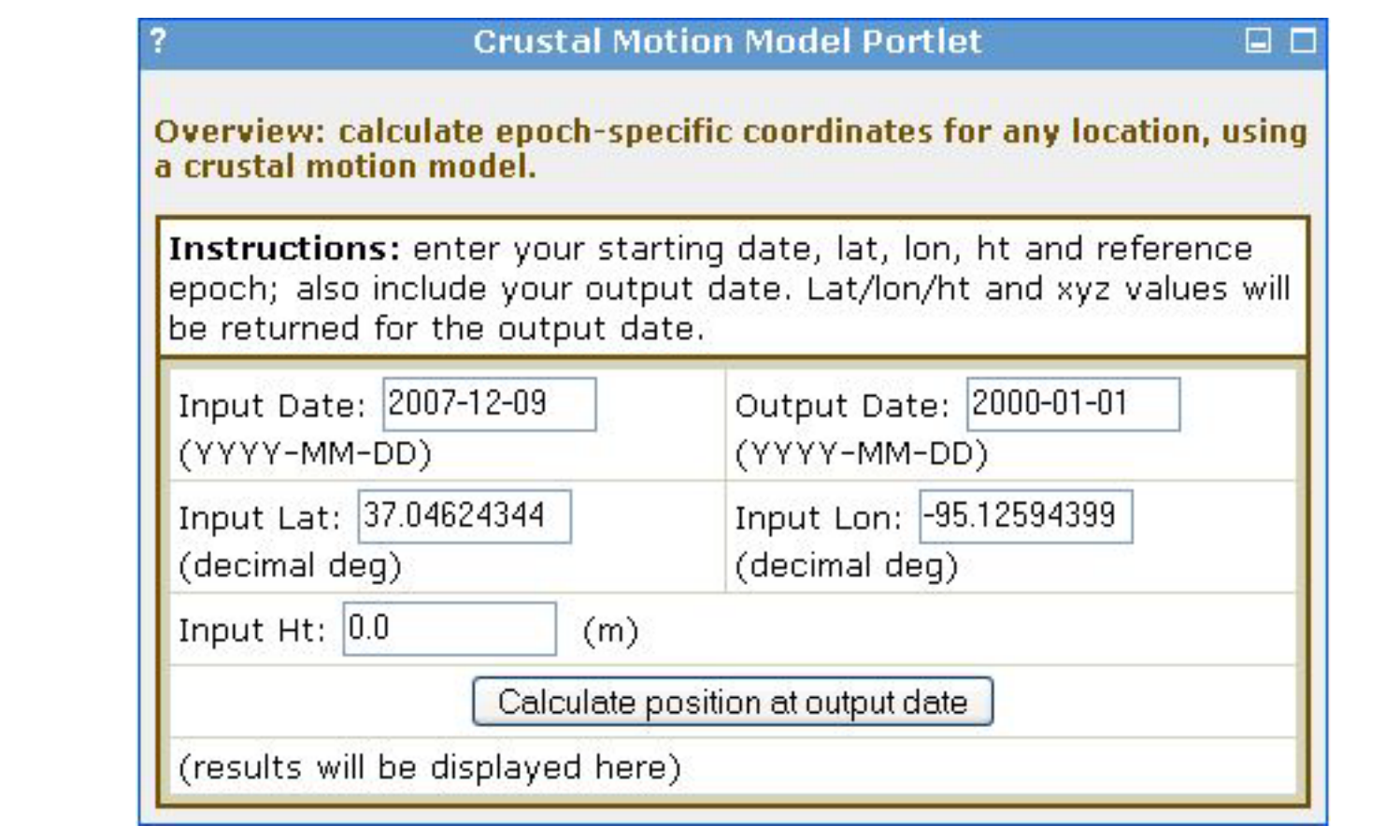
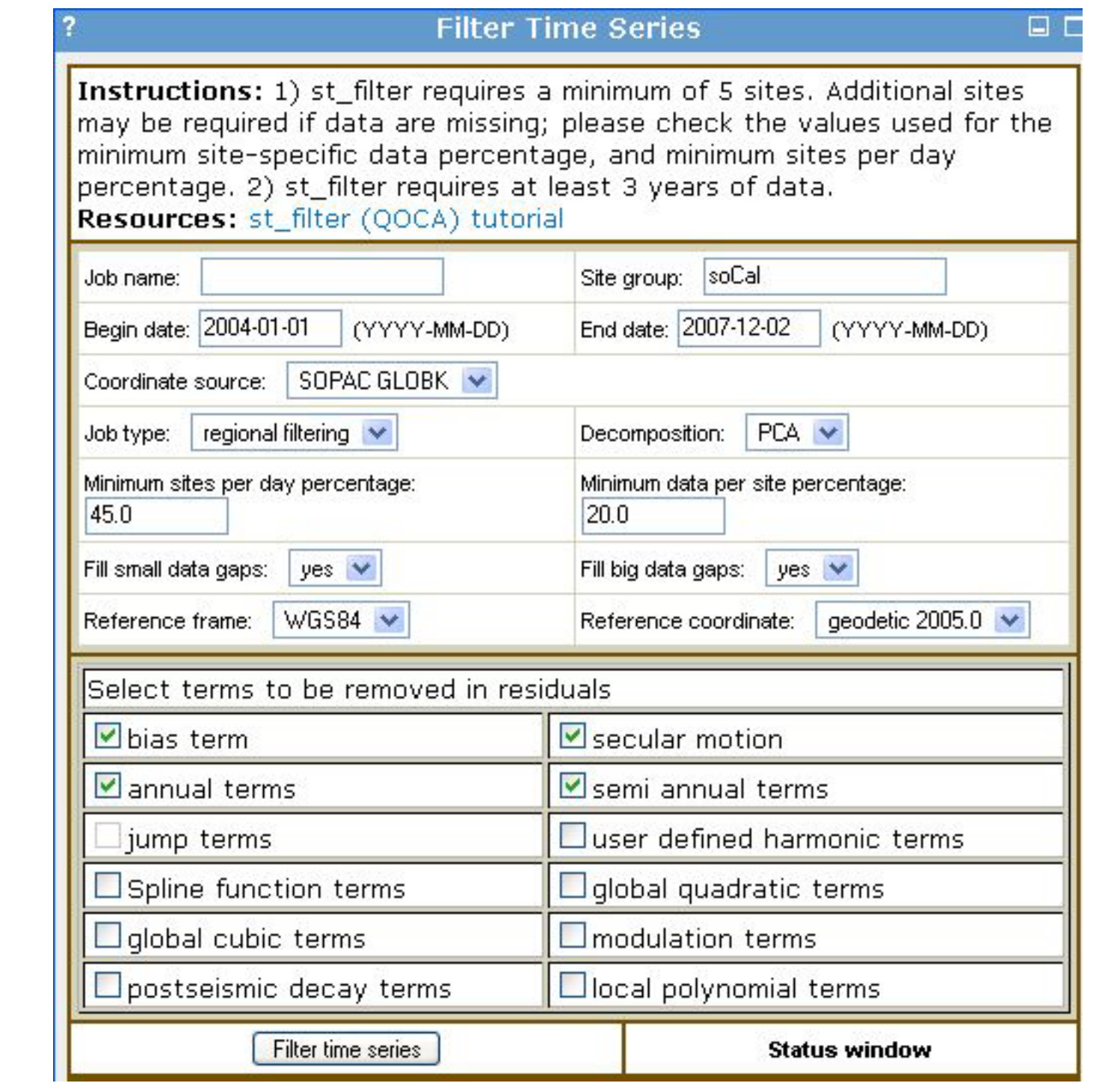
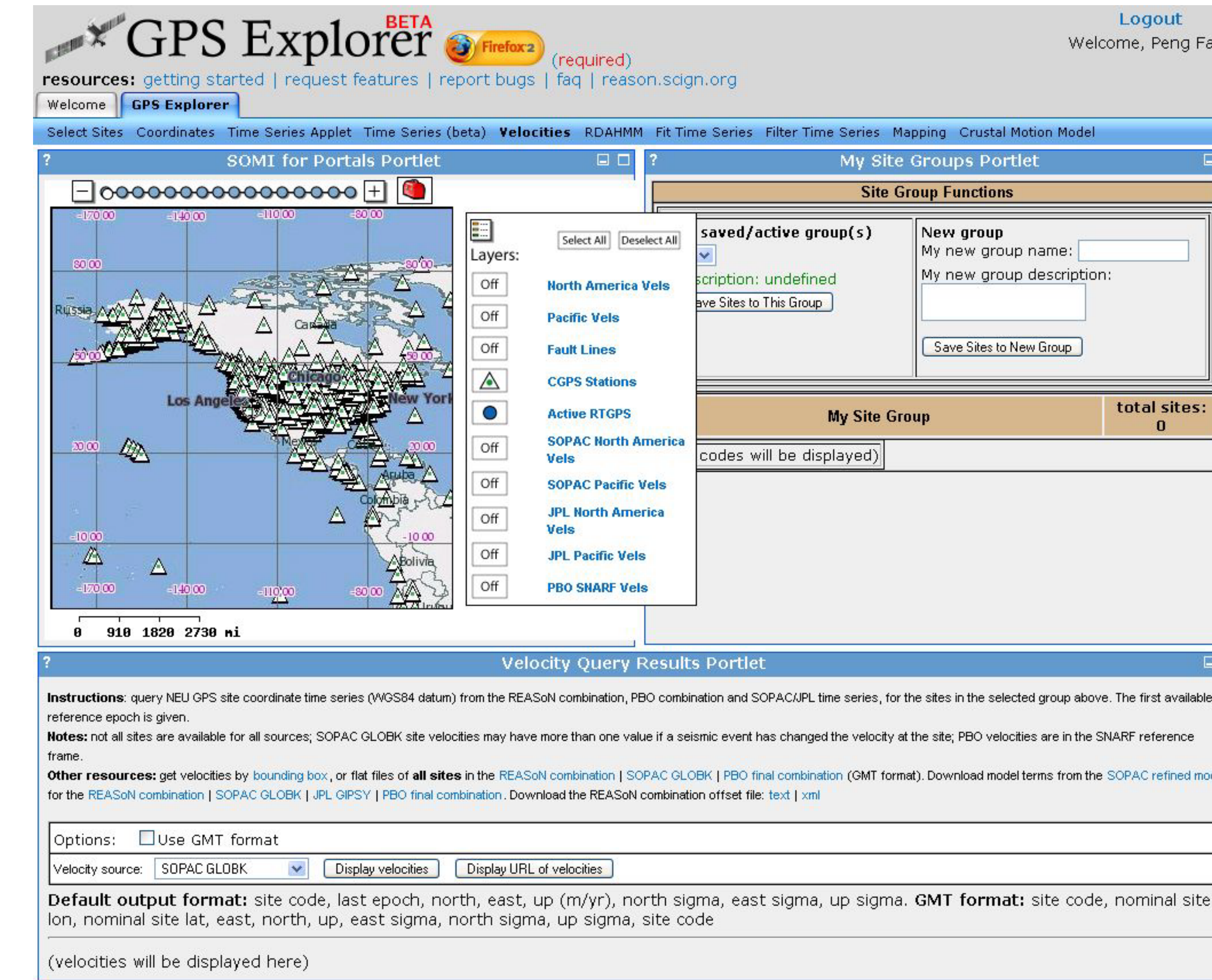
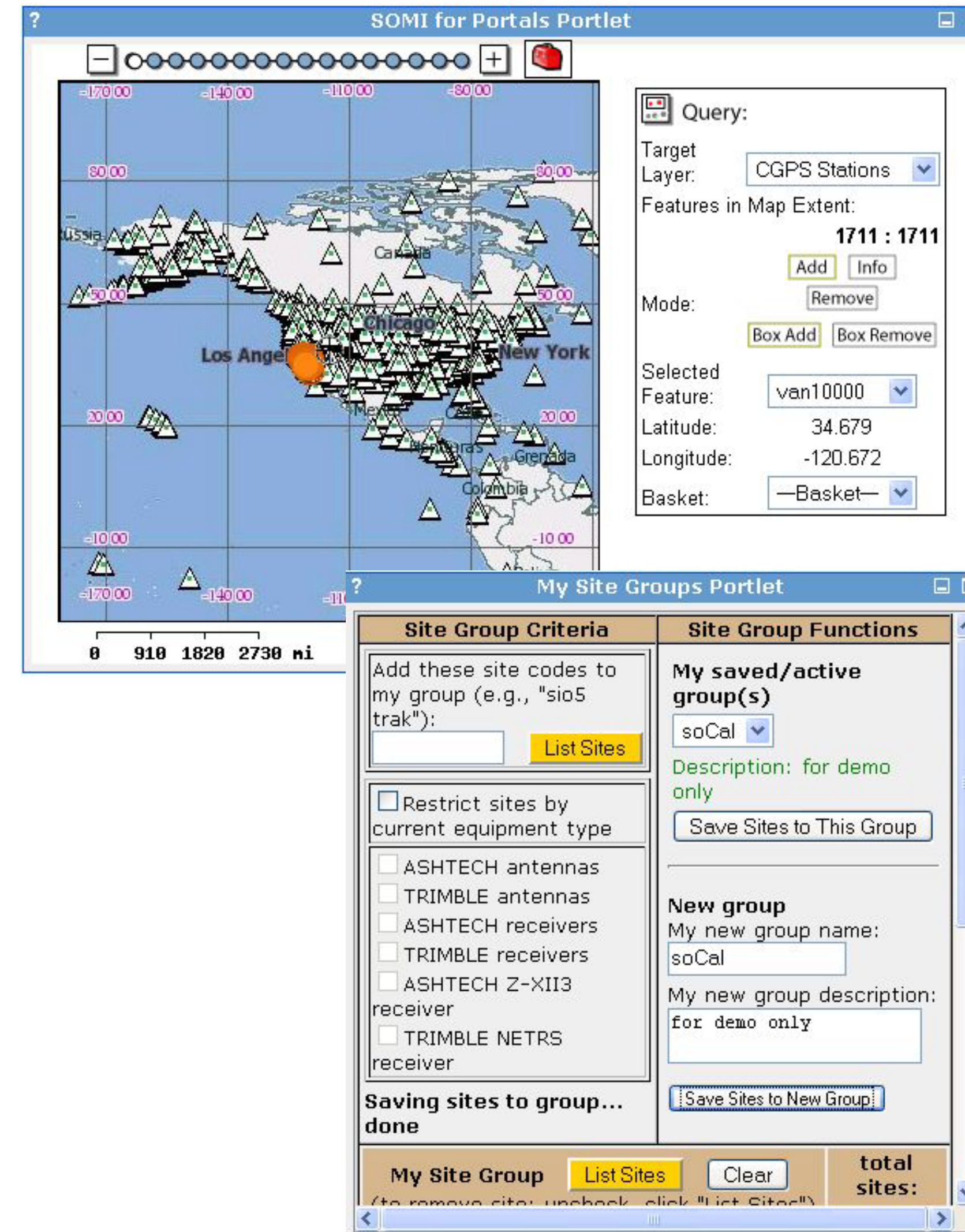
Yehuda Bock, Peng Fang, Linette Prawirodirdjo, Paul Jamason, Ruey-Juin Chang, Ian Macleod, George Wadsworth

Scripps Orbit and Permanent Array Center
 University of California San Diego



GPS Analysis tools

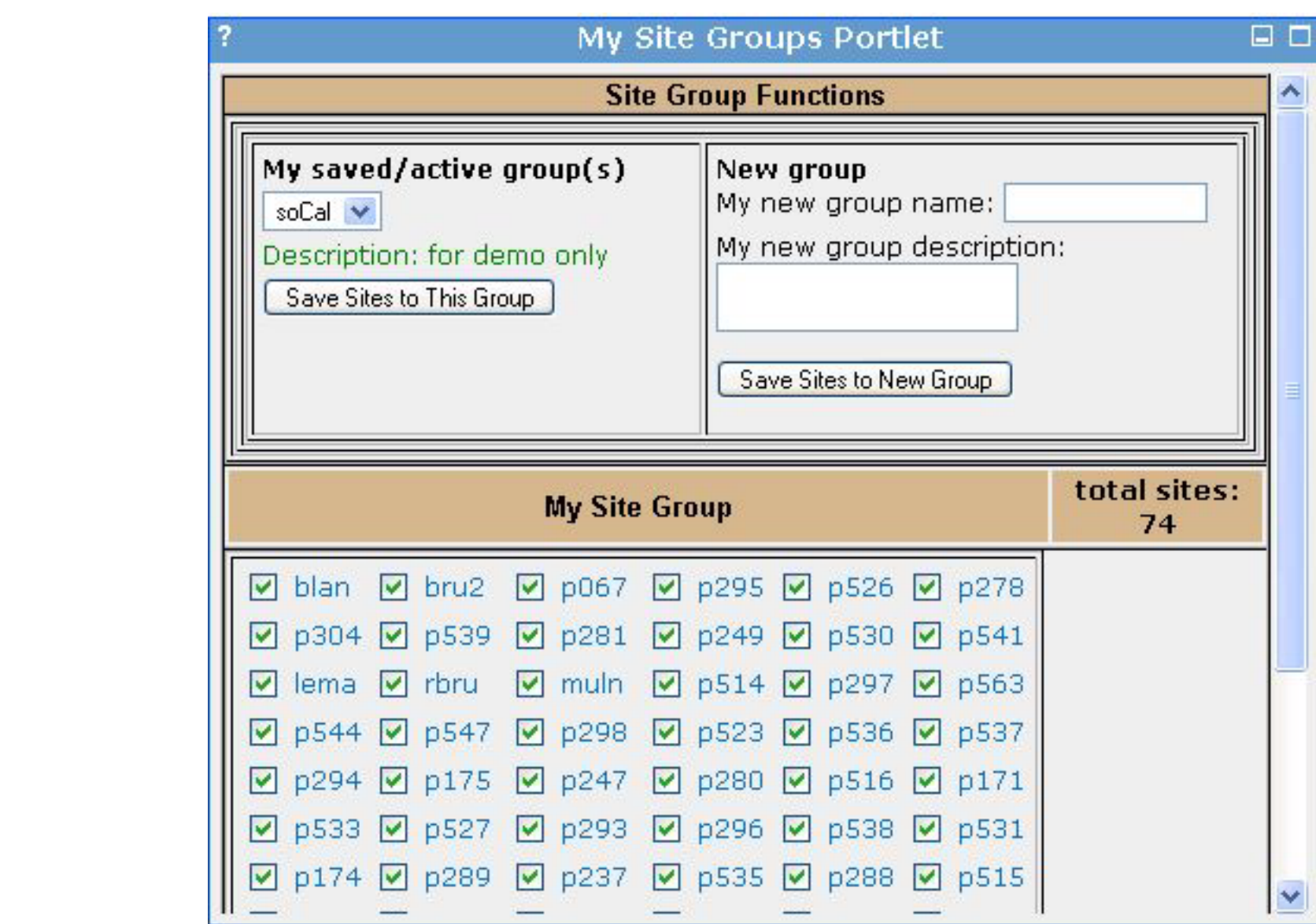
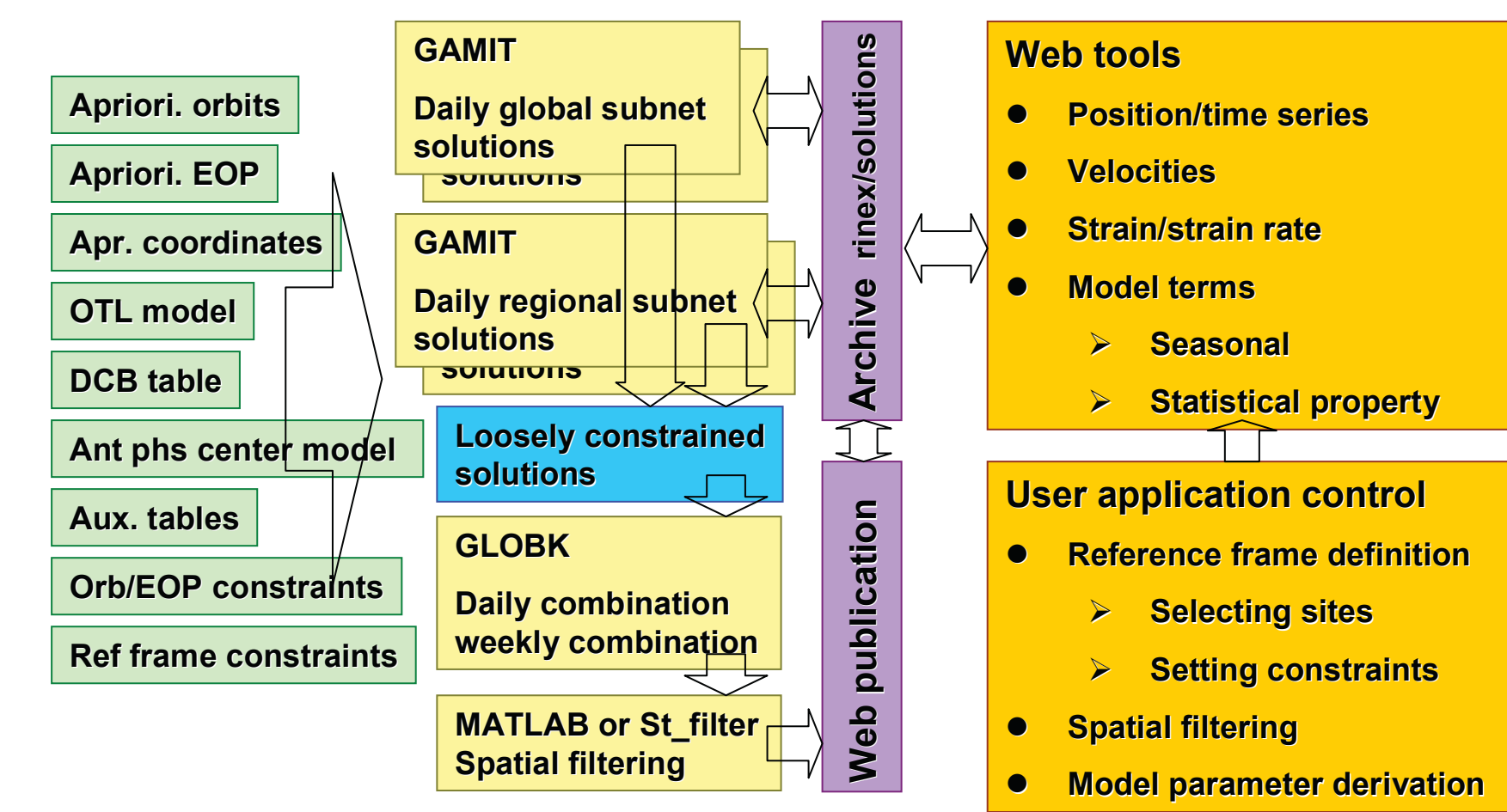
- **Select sites (SOMI map based)**
 - Bounding box (with/without restrictions)
 - Site group (with/without restrictions)
- **Coordinates**
- **Time series**
- **Velocity**
- **Time series fitting**
- **Spatial filtering**
- **Mapping**
- **Crustal modeling**



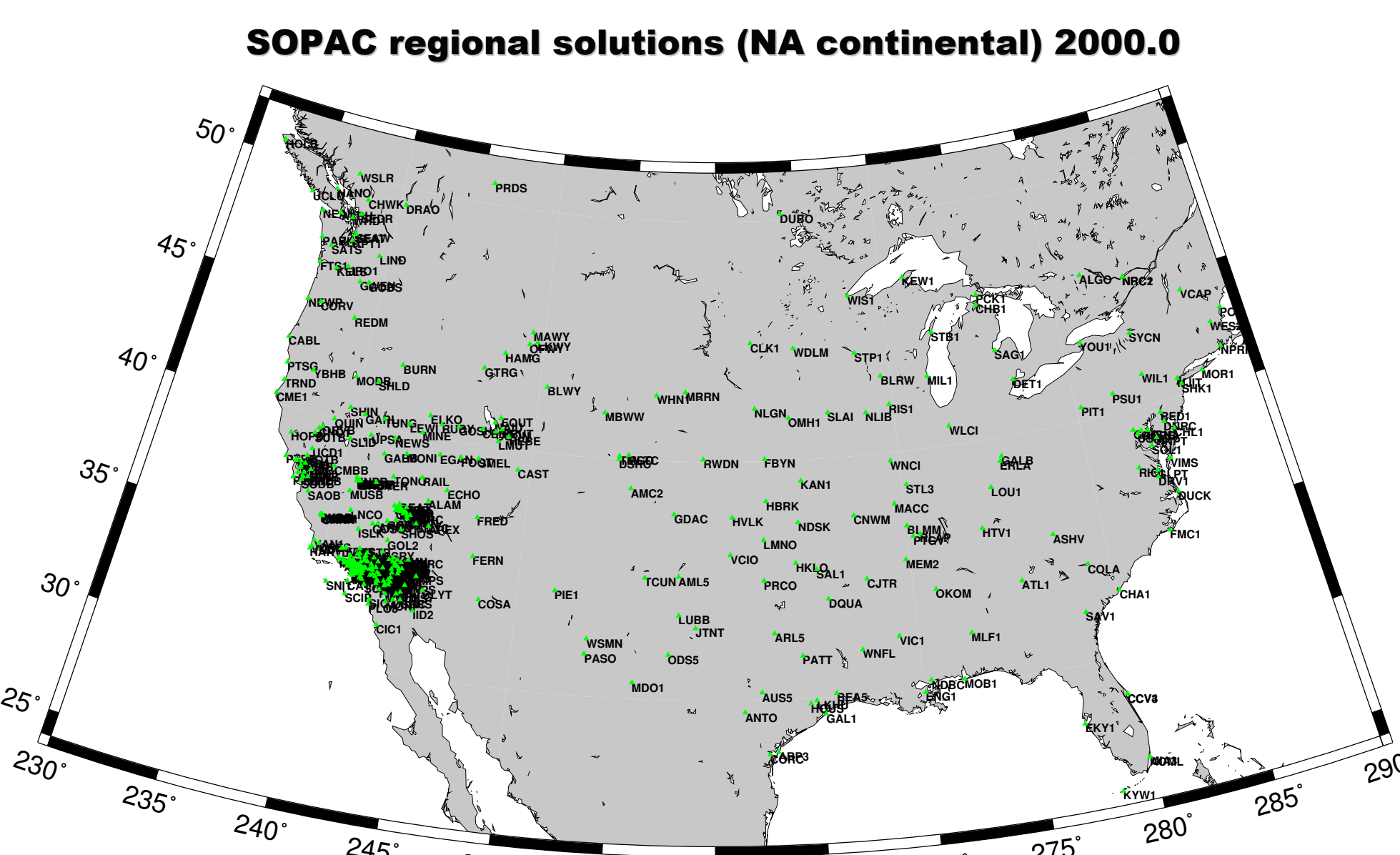
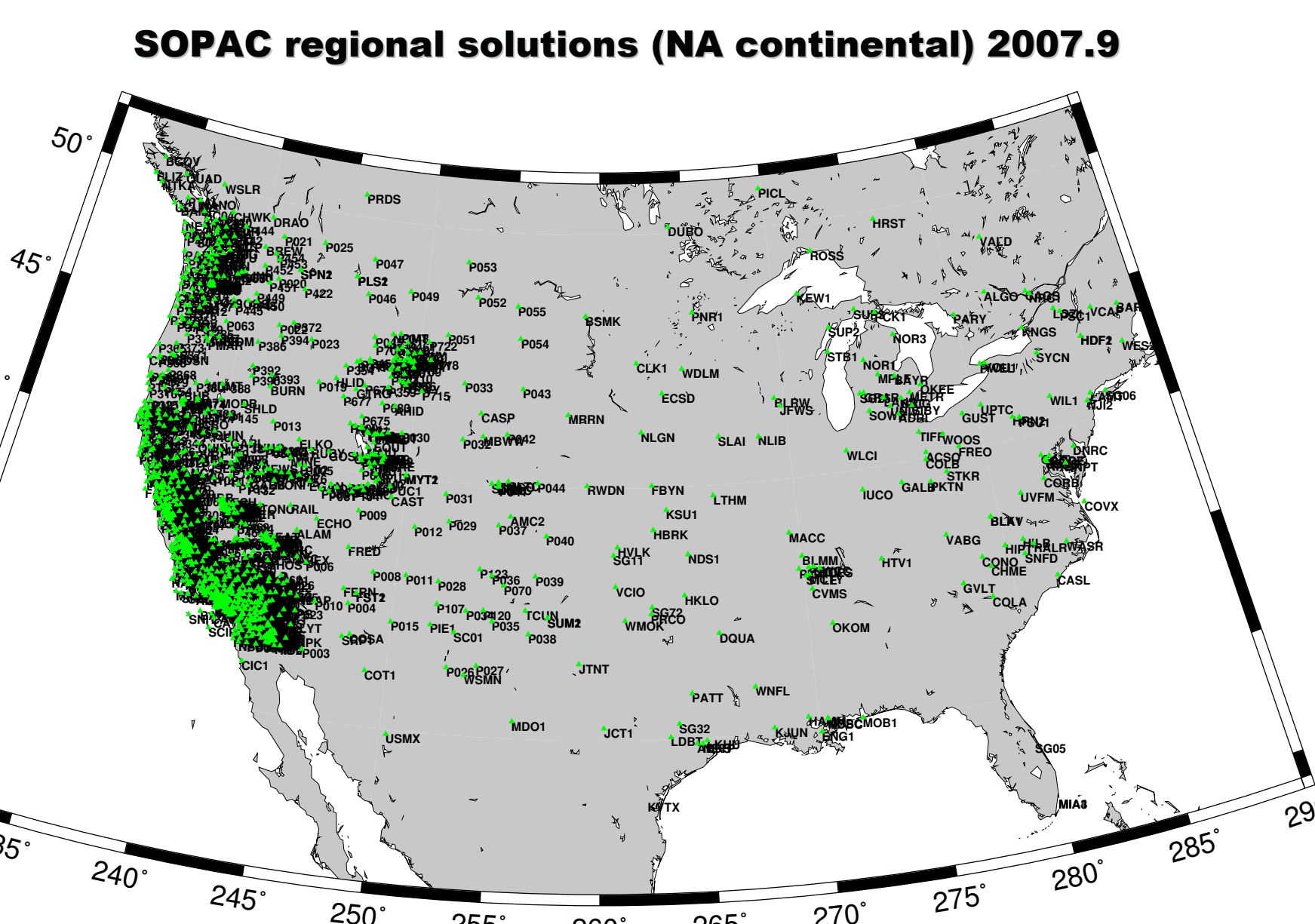
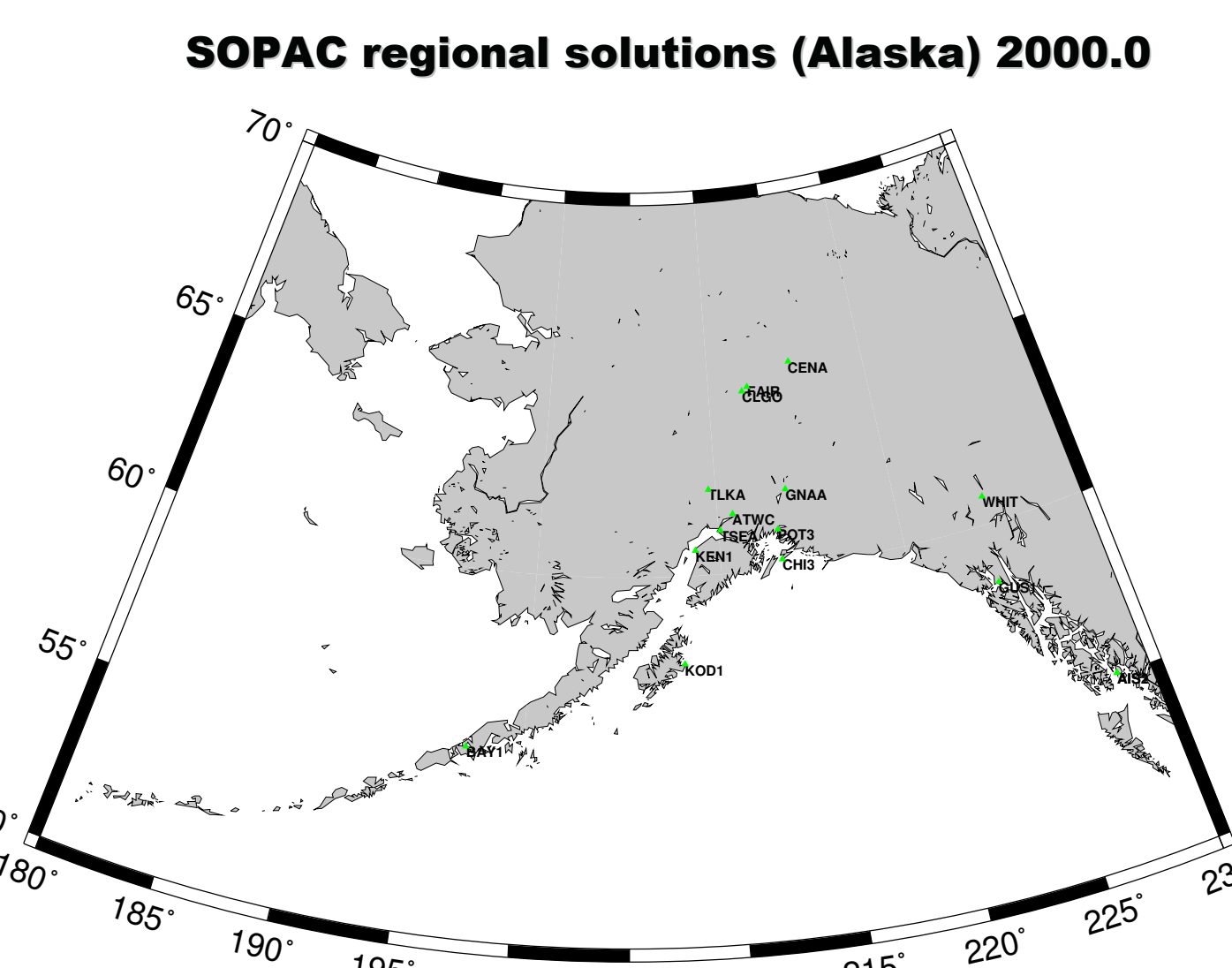
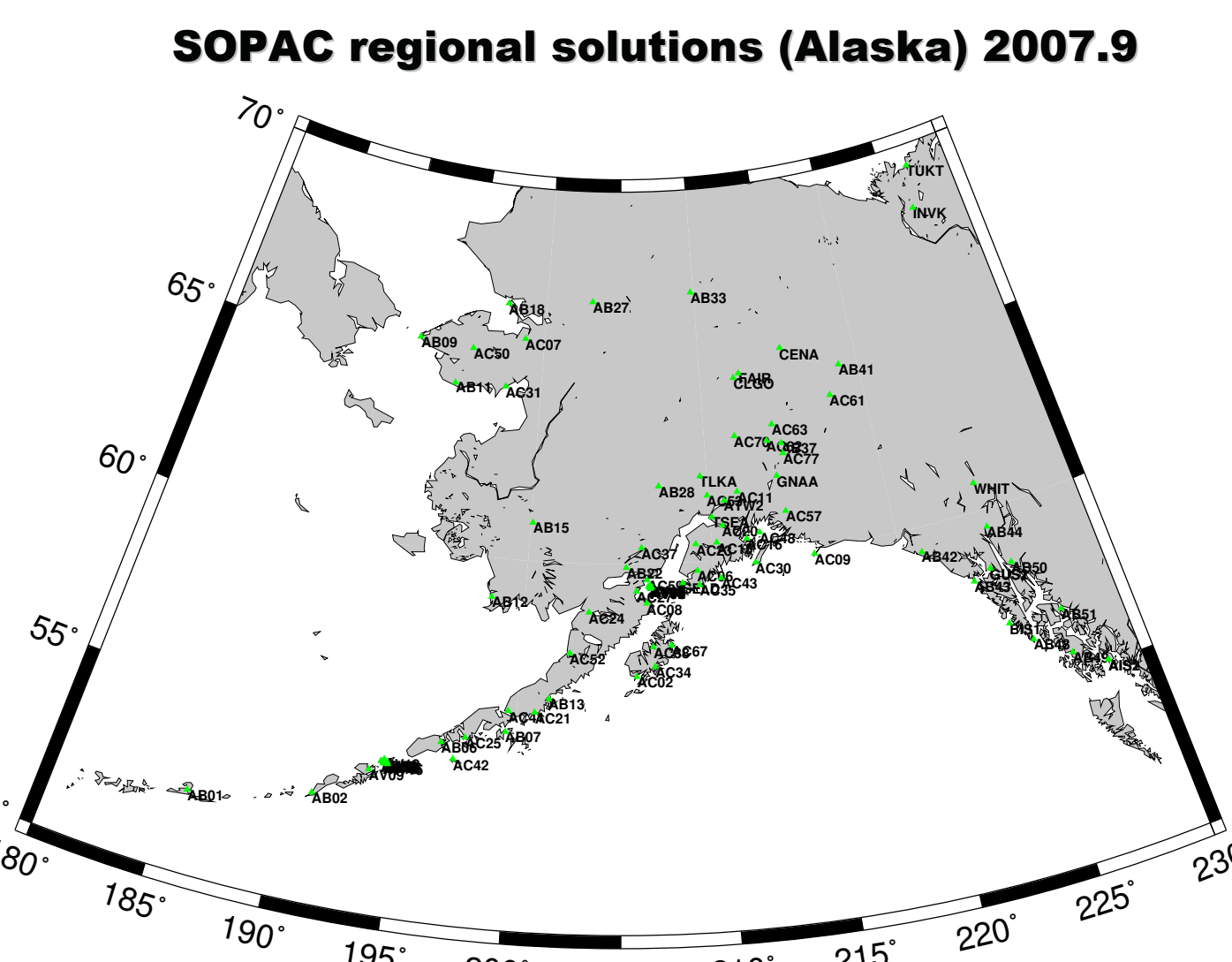
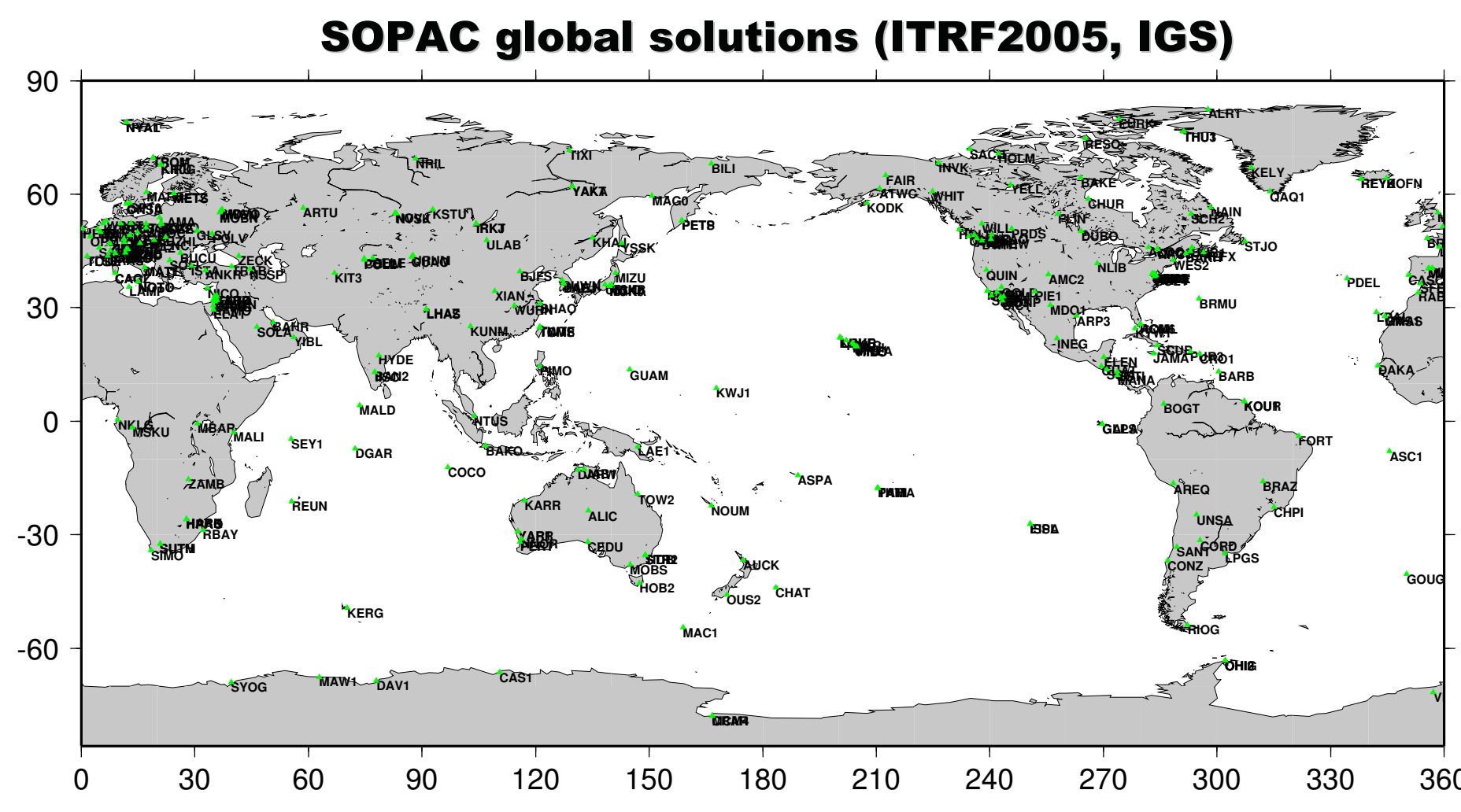
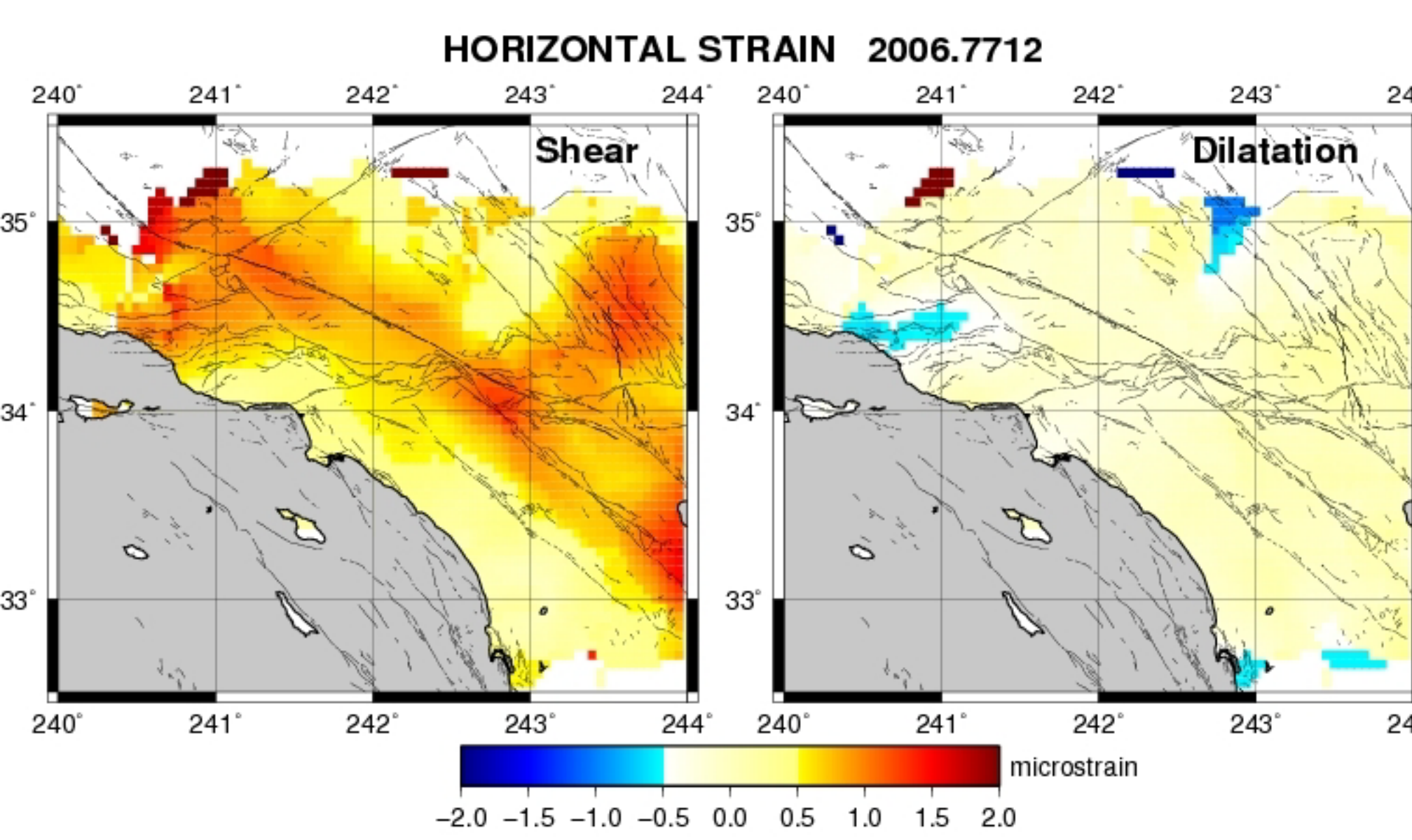
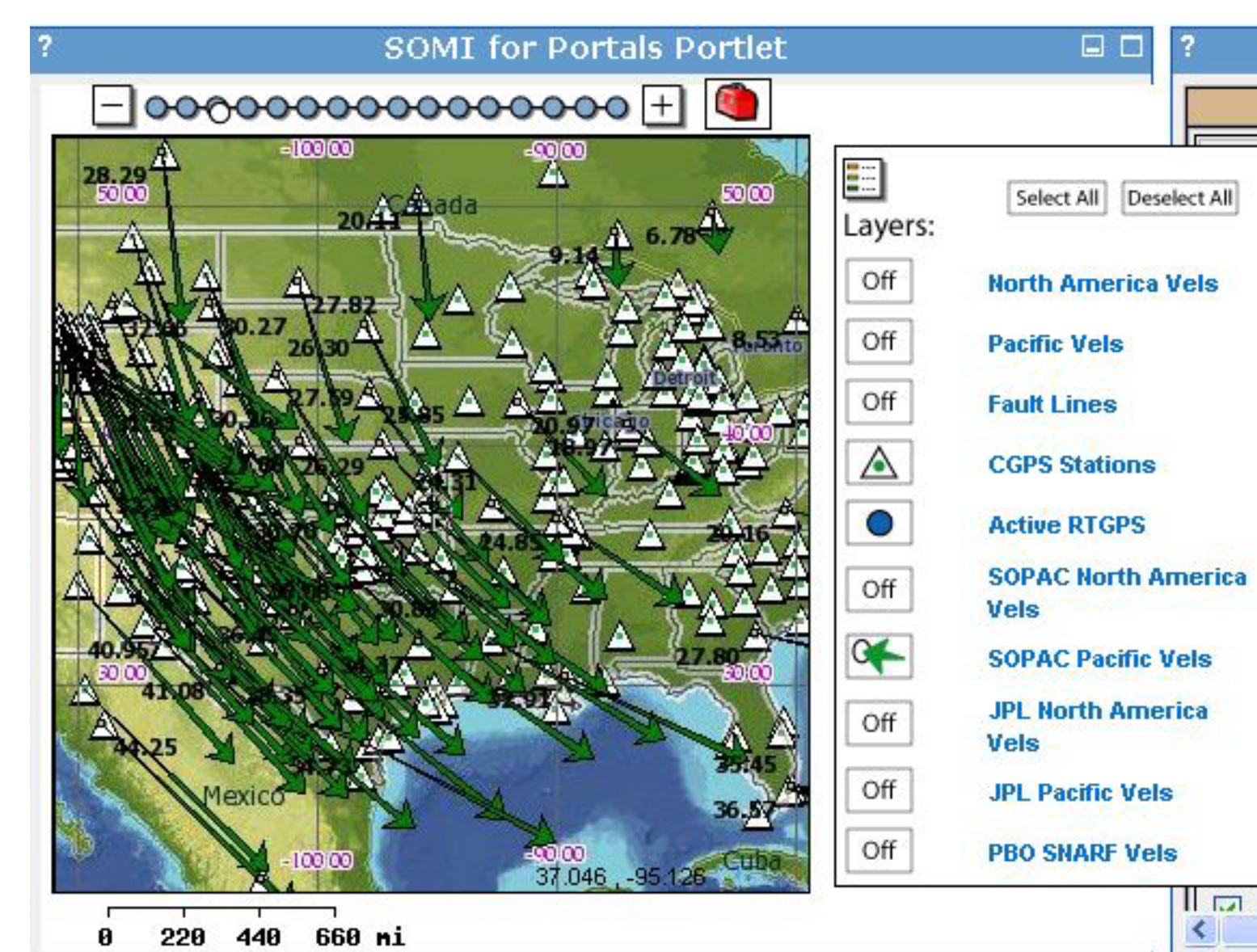
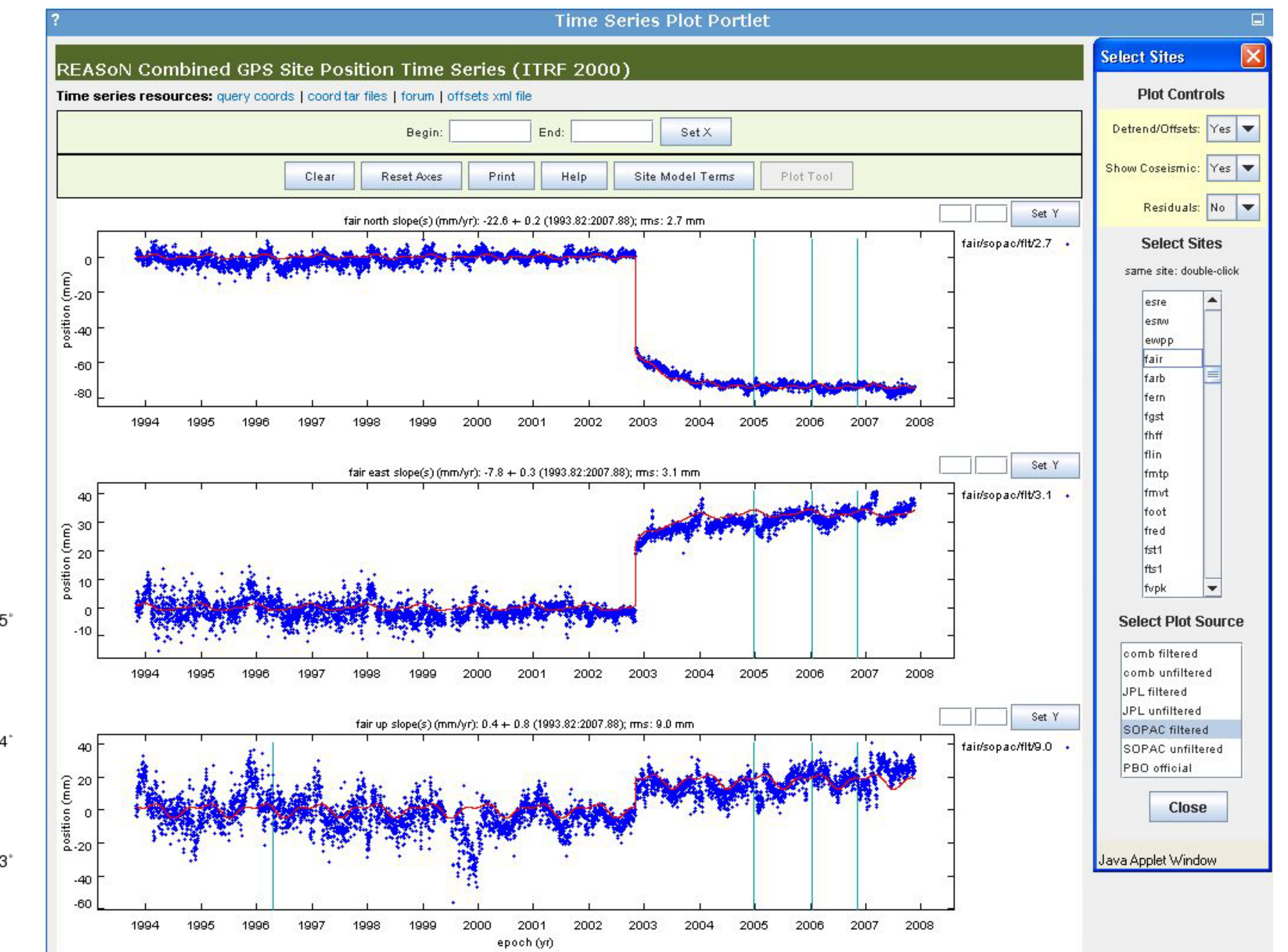
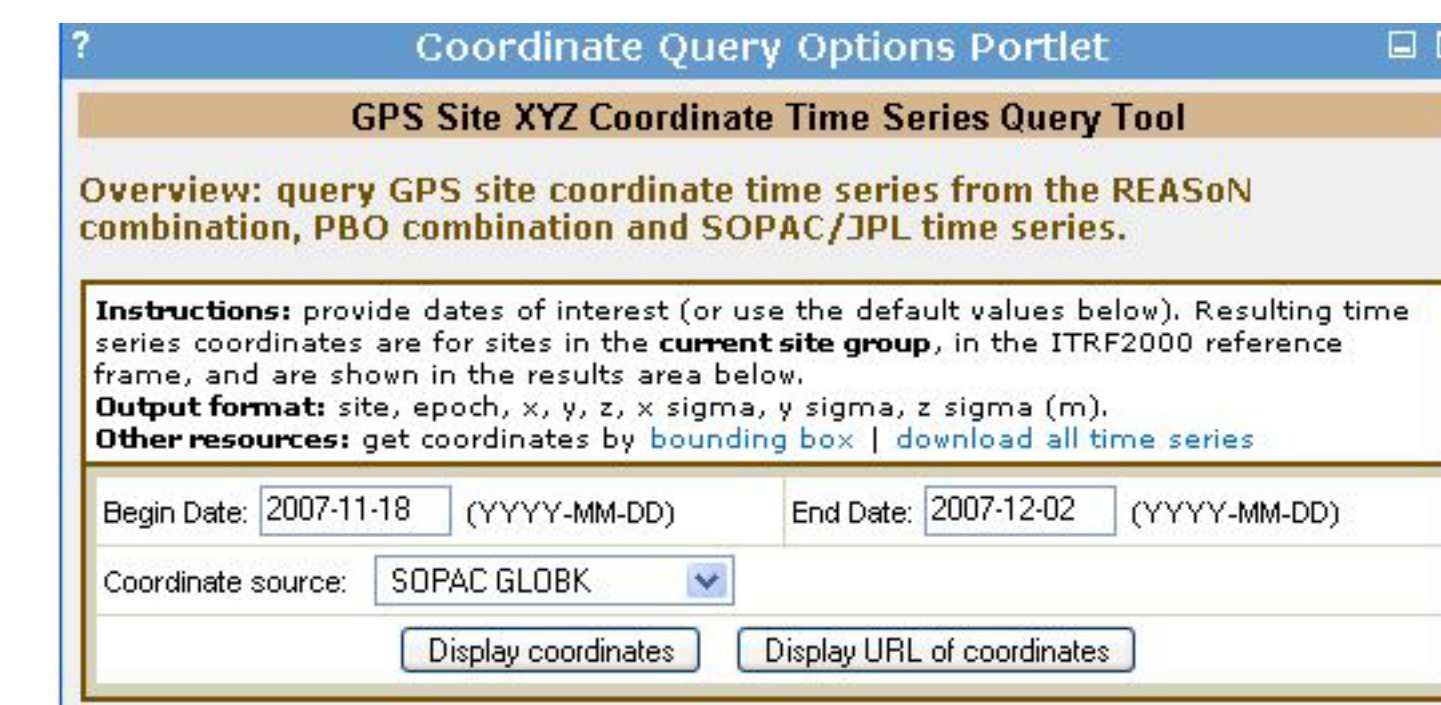
Data Processing Strategy (main differences from previous solutions)

Reference frame	Iterf2005
Antenna phase center model	Absolute (IGS)
Tropospheric model	Vienna tropo. Mapping function
Ocean tidal loading model	FES2004 with CMC correction
Differential code biases	DCB for receivers and satellites (IGS)
Updated software package	GAMIT/GLOBK 10.32 Improved ambiguity resolution
Extra data sets	TIGA, VLBI-SLR collocated, DORIS

SOPAC Services



Participating agencies: NASA, JPL, SOPAC, Community Grids Lab



<http://geodemo-c.ucsd.edu/gridsphere/gridsphere?cid=login>

8th SNARF workshop, AGU Special Session, San Francisco, Dec. 12, 2007